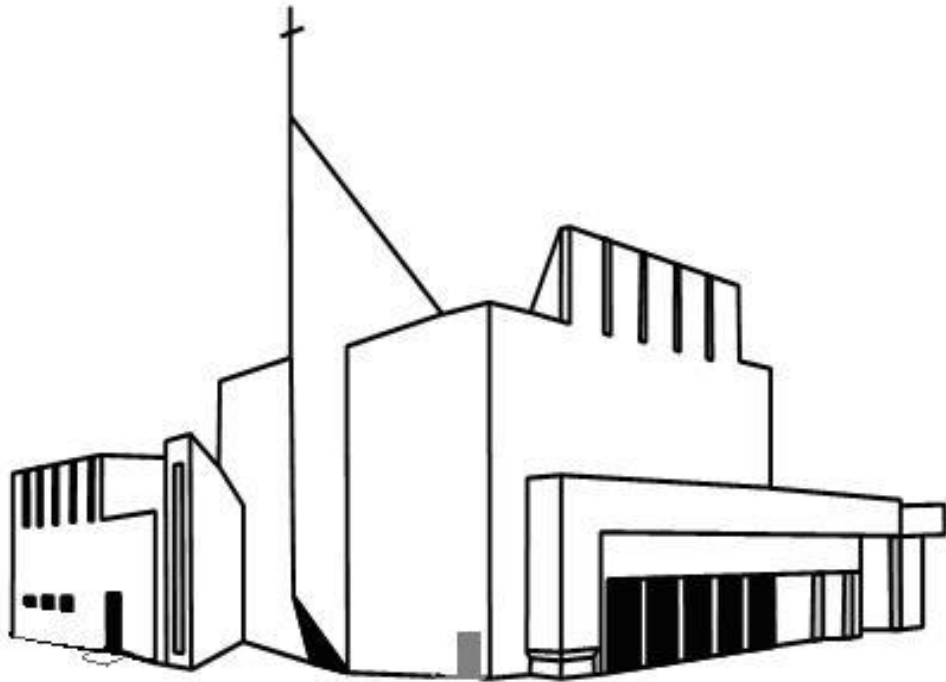


WELCOME

to St. Luke's Parish!



*Whether you are new to our parish or
have been a parishioner for a long time,
we hope you feel at home here.*

PLEASE TAKE THIS BOOKLET HOME WITH YOU.

**IT WILL GIVE YOU MORE INFORMATION ABOUT
THE VIBRANT PARISH LIFE OF ST. LUKE'S.**

**1566 Northmount Drive NW
Calgary AB T2L 0G6
Phone (403) 282-9488
Fax (403) 282-0502
www.stlukeschurch.ca**

**St. Luke's is a welcoming community that reaches out,
draws people into Christ's presence and
connects them into the life of the parish.**

BE AN ACTIVE PARISHIONER!

If you are new to St. Luke's,

please register at the parish office by filling out and returning the registration form on the last page of this booklet.

Whether you are new to the Parish, or are a long-time member, consider some of the many ways you can serve as an active member of the Parish community.

Active participation is essential to our parish's vitality and spiritual well being. Your help is both needed and appreciated!



Read on to discover the many ways you can participate in, benefit from and support our faith community...

STEWARDSHIP: SHARING GIFTS OF TIME, TALENT AND TREASURE.

Christian stewardship is a way of life based on the awareness that everything we have and everything we are comes from God.

A Christian steward is one who receives God's gifts gratefully, cherishes and tends them in a responsible manner, shares them in justice & love with others, and returns them with increase to the Lord.

Each member of the Church is called to practise stewardship. We are called to look outward and to place ourselves at the service of the entire human community, especially those most in need.

VOLUNTEERING

Our parish is blessed by the excellent spirit and generosity of those parishioners who live out their life of faith in the service of others and volunteer in our many ministries. More volunteers are always needed and welcomed.

If you are interested in becoming a volunteer, please fill out and return the form on the last page of this booklet. You will be contacted soon after.

A DUTY OF CARE

St. Luke's recognizes that we owe a duty of care to protect our parishioners and our parish. A volunteer must be prepared to share information about themselves with the parish and meet with a ministry coordinator.

Volunteers in roles involving minors, seniors and other vulnerable people, finances, and critical, sensitive information also require a Police Information Check.

**This booklet is only an introduction to St. Luke's.
FOR MORE INFORMATION:**

- **Phone the office – 403-282-9488**
- **Visit the website – www.stlukeschurch.ca**
- **Check the *Pamphlet Rack* in the Narthex**
- **Read the Parish Bulletin. It has information about Mass times, sacraments, events, and how to contact clergy, staff and ministry coordinators.**

PARISH FORMATION COMMITTEES



PARISH PASTORAL COUNCIL

The Parish Pastoral Council works together with the pastor and the members of the parish team to understand and address pastoral matters related to the parish. At the monthly Council meetings, ministry coordinators share the status of their ministries and solicit input and support.

STEWARDSHIP COUNCIL

The Stewardship Council works with the Pastor, Parish Pastoral Council and ministries to infuse stewardship into every aspect of parish life. Once a month, our parish prays a Stewardship Prayer at the Sunday Liturgies.

VOCATION COMMITTEE

This group seeks to help promote and encourage awareness that God has a plan for each person; whether they are called to be a priest, religious, single or married person. Once a month, our parish prays a Vocation Prayer at the Sunday Liturgies.

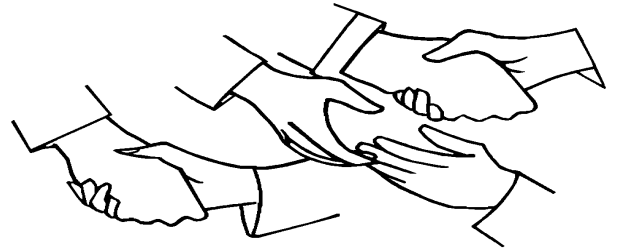
HOSPITALITY MINISTRIES

WELCOMING COMMITTEE

Welcoming Committee members greet new parishioners by telephone on behalf of the pastoral team and parish family, and inform them of the programs and activities that are carried on within St. Luke's.

GREETERS

Greeters welcome people as they arrive at church for the Sunday liturgy. They help to establish a climate of welcome, helpfulness and belonging among St. Luke's parishioners and visitors.



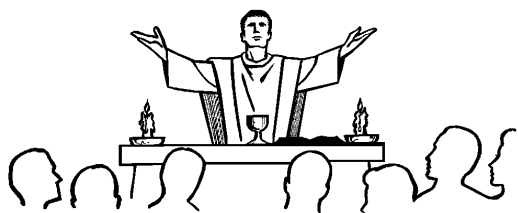
USHERS

Ushers are among the first persons to meet and greet parishioners and visitors when they come to worship at St. Luke's. They assist the assembly through hospitality and service during Sunday Liturgies.

COFFEE SUNDAY

Coffee Sunday volunteers act as hosts and serve refreshments following the morning Masses on the first Sunday of the month from October to June, providing an opportunity for the faithful to socialize with friends and visitors following their shared worship experience.

LITURGICAL MINISTRIES



ALTAR SERVERS

Altar servers have the important role of assisting the priest in the celebration of the Mass on Sundays and special feasts and occasions.

Boys and girls who are 9 years and older and who have received First Holy Communion can be altar servers.

LECTORS

Lectors minister in the Sunday liturgy by proclaiming the Word of God contained in the First and Second Readings, and by reading the Psalm and the Prayer of the Faithful, as well as the announcements and themes before the liturgy begins.

EUCCHARISTIC MINISTERS

Eucharistic Ministers are special ministers of Communion authorised by the Church to share the Body and Blood of Christ with fellow worshippers. They assist in the distribution of Holy Communion at Mass.

CHILDREN'S LITURGY

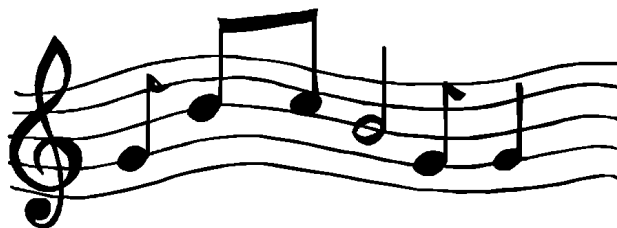
The goal of Children's Liturgy is to help children ages 4-7 celebrate the Liturgy of the Word at their level and explore different ways that they can live the Good News in their daily lives. Adults and teenagers celebrate a prescribed program during Sunday morning liturgies.

SACRISTANS

Sacristans are commissioned Eucharistic Ministers who prepare the sanctuary prior to the celebration of Mass, monitor the distribution of communion, and clean and put away all vessels after Mass.

MUSIC MINISTRY

Music forms an integral part of the liturgy. It assists the congregation to express and share the gift of faith with joy and enthusiasm. St. Luke's is blessed with several choirs who are always ready to welcome new members of all ages.



SOUND & VIDEO

Sound board operators control the audio system, and projector operators control the video system using a laptop computer during liturgical and other celebrations in the church. Familiarization/training are provided.

ART & ENVIRONMENT

The Art & Environment group chooses, designs, sets up and maintains decorations in the church, atriums and entrances to enhance the character of liturgical celebrations and the parish community's worship experiences.

(Continued on next page)

GIFT BEARERS

This ministry involves bringing the gifts of bread and wine to the altar and presenting them to the presider during the preparation of the gifts. There is no schedule for this ministry. Couples, families or individuals who wish to be Gift Bearers at a Sunday Liturgy should inform the ushers before the Mass.

FUNERAL CHOIR AND FUNERAL LUNCHEONS

Our parish has a choir that provides singing for funeral services when requested. The CWL will provide a reception of sandwiches and squares following funerals held in our church. Additional servers and donations of squares are always welcome.

YOUTH MINISTRY



St. Luke's Youth Ministry promotes the presence of Christ among youth in the community. We endeavour to help young adults and students (grades 6-12) live their Catholic faith, enjoy time with friends, and serve as stewards of God's love. Adult ministers and youth speakers lead retreats, outreach, and service opportunities. On regularly-scheduled nights from September to June, the youth ministry coordinator provides spiritual enrichment through games, crafts, fellowship, teamwork and prayer.

OUTREACH MINISTRIES

HELP THE NEEDY

People within the parish boundaries, regardless of their religious orientation, who find themselves in need, may receive assistance through St. Luke's Help the Needy ministry, primarily with grocery hampers and information about organizations within the city that can provide other types of assistance.

INN FROM THE COLD



Inn from the Cold is an outreach program whereby volunteers from St. Luke's Parish provide a monthly overnight hosting and hospitality program to the homeless of Calgary, in cooperation with the Inn from the Cold Society.

PASTORAL CARE

The ministry of Pastoral Care provides spiritual and religious support to parishioners who are lonely, sick, shut-in, elderly, dying or grieving. Pastoral Care volunteers make regularly scheduled visits to homebound and institutionalized parishioners.



ENGLISH FOR NEW CANADIANS

People who are new to Canada meet with St. Luke's volunteers on Monday mornings from September to June. They make friends and have fun as they learn English and about Canadian culture, and share customs about their own native cultures. The start of the sessions is advertised in the bulletin.

REFUGEE SUPPORT GROUP

St. Luke's Refugee Support Group works in cooperation with the Calgary Catholic Immigration Society (CCIS) to provide resettlement assistance to qualified refugees from many countries. Newly arrived refugees are assisted in obtaining government documents, housing, orientation to shopping and transit, medical support, etc.

SANDWICH MINISTRY

This ministry provides lunches for the working poor in collaboration with the Calgary Drop-In Centre. Volunteer teams gather every second Wednesday morning according to a schedule to make sandwiches. Parishioners are invited to provide sandwich makings.

RITE OF CHRISTIAN INITIATION FOR ADULTS (RCIA)

Adult RCIA is a process of welcoming adults (inquirers) into full membership in the Roman Catholic Church. RCIA Sponsors are confirmed Catholics who model, for the inquirers, a Catholic lifestyle. They commit to attending weekly meetings and all the rites on Sunday with their inquirers.

Check the weekly bulletin or contact the parish office for the names and phone numbers of ministry coordinators.



FAITH EDUCATION AND ENRICHMENT

SCRIPTURE STUDY

Series on Scripture Study are presented by scripture scholar Sr. Darlene Madore, FCJ, at various times during the year. Dates, times, locations and costs are advertised in St. Luke's bulletin and on St. Luke's and the FCJ Centre websites.

MOM'S TIME OUT

Mom's Time Out is a women's group organized by mothers for mothers within and outside the parish who are seeking a much needed break. Mom's Time Out offers friendship and spiritual, intellectual and emotional support. The group meets Thursday mornings, September through June.

LIBRARY

The lending library is located in the atrium. It has a wide selection of good spiritual reading material for children, youth and adults, including books on Mary and the saints, prayer and scripture study, the Church and family life, etc.

LEGION OF MARY



The Legion of Mary is a world-wide Catholic apostolic organization, under the sanction of the church and the leadership of Mary Immaculate. It is involved in a variety of parish ministries dependent on the needs of the parish and the direction of the pastor. Active members attend a meeting and perform apostolic work weekly. Auxiliary members are not required to attend meetings; they uphold the apostolate through daily recitation of the Rosary and the Legion prayer leaflet. Junior members, seven to 17 years of age, attend a weekly meeting and perform assigned work, generally within the home or church environment.

DEVELOPING LEADERS AND VOCATION PROMOTION

Developing Leaders and Vocation Promotion encourages leadership and vocations (religious or secular) among members through evangelization, worship and sharing of faith. The meetings use the framework of the Divine Mercy Chaplet in prayer and song. The program is open to both individuals and families (children aged 12 & above).



DEVOTIONS

ADORATION OF THE BLESSED SACRAMENT

Parishioners worship Jesus Christ present in the Holy Eucharist continually in the chapel throughout weekdays and overnight on the first Sunday of every month. They make a commitment by signing up for an hour or more each week. All parishioners are welcome to drop in at any time to spend a long or short time in adoration.



FAMILIES OF NAZARETH

The Families of Nazareth Movement is an international movement of Catholic faithful aspiring to deepen their Christian lives.

Meetings, led by animators, consist of prayer, readings and faith sharing. Families of Nazareth meets weekly on Thursday evenings at 7:00 PM.

PRAYER GROUP

St. Luke's Prayer Group meets in the parish centre every Tuesday throughout the year at 7:30 PM to pray, to thank God for the gift of salvation, to encourage each other to grow in commitment and service to Christ and the Church, and to seek and recognize the guidance of the Holy Spirit in our daily lives.

PERPETUAL ROSARY

Parishioners commit to praying one decade of the rosary, reflecting on a specific mystery of the rosary each day, at the time and in the place of their choosing.



CENACLE

St. Luke's chapter of the Cenacles of the Marian Movement of Priests meets Saturday mornings following the 9:00 AM Mass and the rosary. The format includes praying the rosary, prayers for the Holy Father, reading and meditation.

PRAISE & WORSHIP

The praise and worship ministry is a family-oriented group that is committed to spiritual growth through praise and worship, prayers and scripture readings. This is a ministry that prays for individual and community needs and studies the Word of God in a family setting. The praise and worship ministry meets once-a-week on Monday evenings in the parish hall.

*St. Luke –
Pray for us!*

SPECIAL SACRAMENTAL PROGRAMS

FOR CHILDREN IN GRADES 1-5

This program is designed for children who have not been baptized or have been baptized in another Christian denomination. Sessions take place Saturday afternoons, September through April. One parent is required to attend all classes with the child.

FOR YOUTH IN GRADES 6-12

Any grade six or junior high student who wishes to receive the sacrament of Baptism in the Catholic faith, or another Catholic sacrament, is welcome to contact the youth ministry coordinator for an interview. Youth programs will be facilitated as the need arises.

RITE OF CHRISTIAN INITIATION FOR ADULTS (RCIA)

The Rite of Christian Initiation of Adults is a process of welcoming adults into full membership in the Roman Catholic Church. The faith journey has a flexible entry date, followed by four stages, each culminating with a rite.

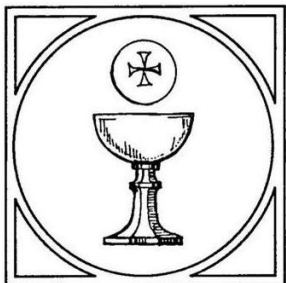


SACRAMENTAL PREPARATION PROGRAMS

BAPTISM

A Baptism Preparation Program is offered on the last Monday of each month for parents who wish to have their first child baptized or have not previously attended a Baptism preparation course for their other children. Anyone who requests to attend may do so. The course covers the history, theology and role of parents as it relates to the Sacrament of Baptism. Registration for baptism must be made through the parish office two months prior to the baptism date.

FIRST HOLY COMMUNION



This program is for all children who are in Grades 2 and up, are baptized Catholic/have made a Profession

of Faith, and wish to receive the Sacrament of First Holy Communion.

FIRST RECONCILIATION (CONFESSION)

All children, typically Grade 4 and up, who are baptized Catholic/have made a Profession of Faith may participate in this program.



CONFIRMATION

All Grade 6 and older students who are baptized Catholic/have made a Profession of Faith and have received First Holy Communion and First Reconciliation will participate in this program. (Students who have not yet received Reconciliation must also register for that sacrament.)

MARRIAGE

Couples who wish to marry in St. Luke's church must call the parish office at least six months prior to making any wedding arrangements. They are expected to worship regularly with our parish community and to participate in a Marriage Preparation Course.



RELIGIOUS ORGANIZATIONS

CATHOLIC WOMEN'S LEAGUE (CWL)



The Catholic Women's League of Canada is a national organization rooted in gospel values calling its members to holiness through service to the people of God. Through the CWL, women of all ages have the opportunity to pray together, support each other, work together on parish and community events, provide assistance to those in need, and to make donations for special events. St. Luke's CWL generally meets on the third Tuesday of each month.

KNIGHTS OF COLUMBUS



Membership in the Knights of Columbus is open to practising Catholic men, 18 years and older. Membership provides the opportunity for wholesome association with congenial companions who are engaged in tasks of charity, unity, fraternity, patriotism and defence of the priesthood.



Welcome in ...

*Welcoming everyone into our midst
as we would welcome Christ.*

CONTACT INFORMATION

NAME: _____

PHONE: _____

ADDRESS: _____

E-MAIL ADDRESS: _____

SIGNATURE: _____

(If applicant is under 18 years of age, a signature of consent from parent or guardian is required)

- Register as Parishioner Request Donation Envelopes
 Receive information on becoming Catholic

I WOULD LIKE MORE INFORMATION ABOUT JOINING:

- | | | | |
|--|---|---|---|
| <input type="checkbox"/> Stewardship Council | <input type="checkbox"/> Vocation Awareness Committee | | |
| <input type="checkbox"/> Legion of Mary | <input type="checkbox"/> Scripture Study | | |
| <input type="checkbox"/> Families of Nazareth | <input type="checkbox"/> Adoration Group | <input type="checkbox"/> Mom's Time Out | |
| <input type="checkbox"/> Knights of Columbus | <input type="checkbox"/> Prayer Group | <input type="checkbox"/> Perpetual Rosary | <input type="checkbox"/> Cenacle |
| <input type="checkbox"/> Developing Leaders & Vocation Promotion | <input type="checkbox"/> CWL | <input type="checkbox"/> Transitions | <input type="checkbox"/> Youth Ministry |
| | <input type="checkbox"/> Praise & Worship | | |

I AM INTERESTED IN VOLUNTEERING IN THE FOLLOWING MINISTRY(S):

HOSPITALITY MINISTRIES

- Welcoming Committee Greeters Ushers Coffee Sunday

LITURGICAL MINISTRIES

- Altar Servers Lectors Eucharistic Ministers Children's Liturgy
 Music Ministry Sacristans Sound & Video Art & Environment
 Funeral Choir Funeral Luncheons

OUTREACH MINISTRIES

- Help the Needy Inn from the Cold Mom's Time Out - Babysitter
 Support Group Pastoral Care English for New Canadians
 Sandwich Ministry RCIA Team Refugee Support Group

PLEASE PROVIDE ME WITH MORE INFORMATION REGARDING:

- Baptism for my child First Communion Reconciliation Confirmation RCIA

OFFICE USE ONLY

PIC:

- Not necessary In process Completed

Please drop this form into the collection basket or return it to the office.